



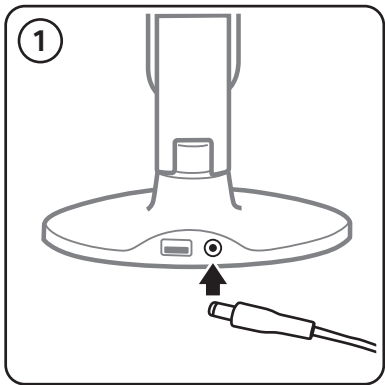
# MediaRange

STYLISH LED DESK LAMP  
WITH DIFFERENT LIGHT MODES

**GB** User manual, Operating- and safety instructions, Warranty conditions

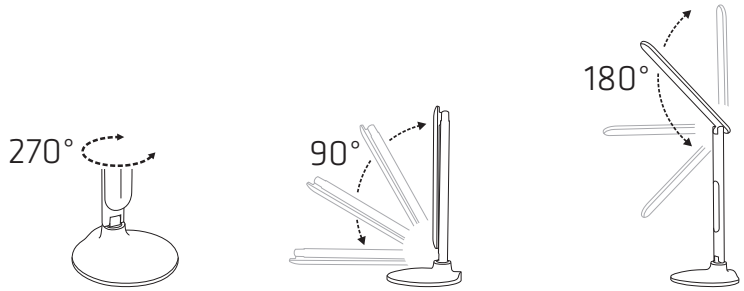


Item no.: MROS501



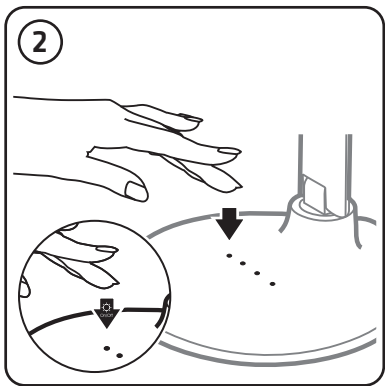
### 1. Setting up and connecting

Place the LED desk lamp on a horizontal and stable surface. The desk lamp comes with three joints for aligning the lamp at an optimal position and perfect illumination of your workplace.



Connect the desk lamp by using the included power supply unit to an outlet. Please make sure that the socket is always easily accessible.

**Note:** To avoid any damages or tipping over during aligning, please hold the base of the desk lamp until you have adjusted the lamp.

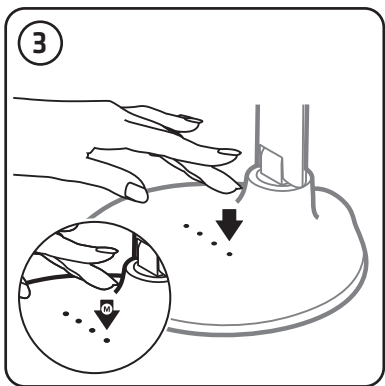


### 2. Turn the LED desk lamp on and off

Touch the “on/off”-button (⏻) to turn on the LED desk lamp. Touch the button again to turn it off.

The desk lamp remembers the previously used light mode and brightness level when you turn it off and will illuminate with those settings when you turn it on again.

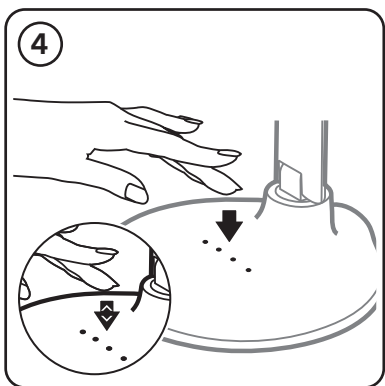
**Note:** Never look directly into the light and do not aim it directly into the eyes of other people or animals! This could lead to serious eye damage!



### 3. Light modes

The LED desk lamp comes with three different light modes. Turn on the lamp and select the required light mode by touching the “mode”-button (M):

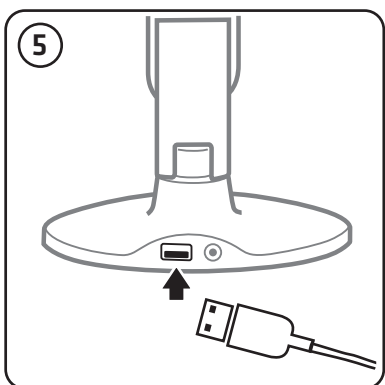
- Study and work mode: cold white light 5.500K ± 500K
- Daylight mode: neutral white light 4.000K ± 400K
- Relax and sleep mode: warm white light 2.800K ± 280K



### 4. Brightness levels | Dimmer function

The LED desk lamp has a dimmer function and has five brightness levels for each light mode. Turn on the desk lamp and select the brightness level you require, by using the arrow keys:

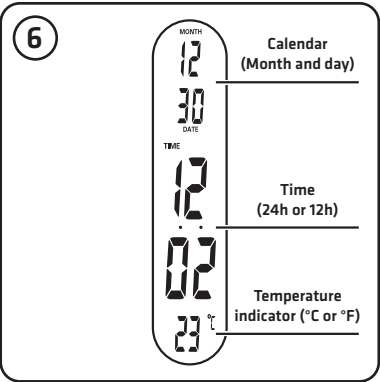
- Arrow key up (⬆): Increase the brightness level
- Arrow key down (⬇): Decrease the brightness level



### 5. Charging mobile devices | USB charging port

The LED desk lamp is equipped with a USB port for charging smartphones, tablets or other mobile devices. Before connecting a device to the USB port, please check if the lamp's USB output power is sufficient to power the device you would like to connect.

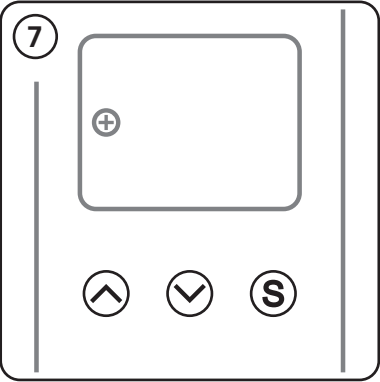
**Note:** Please use the USB port only for charging appropriate devices and do not connect any other USB device. The LED desk lamp cannot be operated by using the USB port.



6. LCD display

The LED desk lamp has a LCD display which shows the time, date and temperature and comes with an additional alarm function.

- Calendar: Month and day
- Time: Hour(s)/Minute(s); 12h or 24h mode  
Alarm function: An alarm clock icon appears, when the alarm is activated.
- Temperature indicator; degrees in Celsius or Fahrenheit



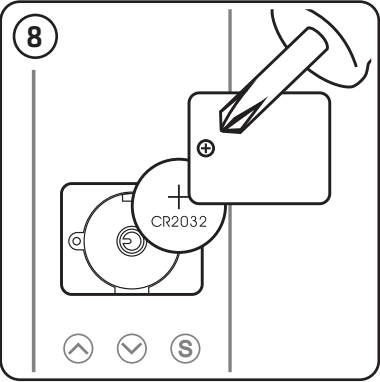
7. Date, time and alarm function settings

To change or adjust the settings for date, time and alarm, push and hold the "set"-button (S) on the back until you hear an acoustic signal.

Now you can set the date (month and day); time (h/min), 12h/24h mode and an alarm, by using the arrow buttons on the back.

If the alarm function is activated, you can check the alarm time by pushing the "set"-button (S) once.

The alarm function can be activated and deactivated by pushing the "arrow up"-button (⬆). If the alarm function is activated, an alarm clock icon will appear on the LCD display.



8. Insert or replace the button cell battery

Open the battery compartment with a phillips screwdriver, insert a CR2032 button cell battery and close the battery compartment again.

If you insert a battery, the time/date/alarm settings will be saved when the LED desk lamp is unplugged or the power is disrupted.

GB Care and cleaning

- Disconnect the LED desk lamp before cleaning.
- Please clean the LED desk lamp only with a slightly damp and lint-free cloth.
- Do not use any aggressive cleaning agents.
- Please make sure that no water or any other liquid gets into the lamp.

GB Technical data

Input power	100 - 240V ~; 50/60Hz; 0.65A
Power consumption	10W
Output power USB port	max. 5V - 0.5A
Lamps	Built-in LEDs (not replaceable)
Operating temperature	-10°C to 40°C
Power supply unit	100 - 240V ~; 12V --- 1.5A
LED life time	30.000h
Luminous flux	> 450lm
Illuminance	> 1.500lx
Dimensions (closed)	Ø 190mm, total height: 445mm
Total length swinging arm	360mm
Weight	± 1.120g

**For indoor use only. The lamp may only be operated with the supplied power supply unit. The luminaire contains built-in LED lamps. The lamps cannot be changed in the luminaire. (EU) 874/2012**

**To improve products performance, the content of this user manual may be revised without prior notice. All brands and product names referenced in this user manual are property of their respective owners and referred to for descriptive purposes only.**



GB Warranty

MediaRange GmbH assumes no liability and provides no warranty for damage resulting from improper installation/mounting, improper use of the product or from failure to observe the operating and/or safety instructions.

## **GB** Support service | Package contents

### Support service

If you have any questions about our products, please contact the MediaRange support service:

Tel.: +49 (0) 6196 523 81 80 or by E-Mail [info@mediarange.de](mailto:info@mediarange.de)

### Package contents

MediaRange LED desk lamp, Power supply unit, 1x CR2032 button cell battery, User manual and warranty conditions

## **GB** Operation- and safety instructions

- The LED desk lamp may only be operated with the supplied power supply unit.
- The lamp can only be operated if it is connected to an electrical outlet.
- Please make sure that the socket is always easily accessible.
- The lamp can not be operated by using the USB port.
- If you do not use the lamp for long periods of time, please disconnect it from the outlet.
- Operate this product only in a dry environment at -10 to 40 degrees Celsius.
- Please use the USB charging port only for appropriate devices and do not insert any objects into the USB port which are not designed for its use.
- Do not use this product in damp environments and do not expose the product or any of its supplied parts to water or other liquids.
- Do not use the product in extremely cold, hot, humid or dusty areas.
- Do not drop this product or handle roughly and protect it against shock and drops in all operating modes.
- Do not open the lamp and do not operate the desk lamp or any of its supplied parts if there is visible damage when wet.
- Do not try to repair the product on your own.
- Never look directly into the lamp and do not aim its light directly into the eyes of other people or animals! This could lead to serious eye damage!
- The lamp may get hot while in use.
- Please be aware that even LED lights may generate heat and get hot: Please let the desk lamp cool off for a couple of minutes before you touch it.
- Please keep the area around the desk lamp free of objects and do not hang anything on it. Doing so could create a fire hazard!
- To avoid any damages or tipping over during aligning, please hold the base of the desk lamp until you have adjusted the lamp and make sure that no electrical cables are damaged or crushed during adjusting.

## **GB** Disposal of used electronic equipment | Disposal of old batteries

This device is subject to the European Directive 2012/19/EG. All electrical devices and used electrical equipment must be disposed of separately from household waste over the appropriate government agencies. Proper disposal of old electronic equipment helps avoid environmental damage.

This device is subject to the European Directive 2006/66/EG. All old batteries must be disposed separately from household garbage through the government agencies designated for that purpose. By disposing the batteries in this prescribed manner, you can avoid environmental damages.

## **GB** Warranty conditions

The warranty only covers material and production defects. The free warranty service covers the repair or replacement of defective parts. All MediaRange products are subject to constant quality inspections and the legal warranty period applies, of course, from the date of purchase. Please be sure to save the sales receipt as proof of purchase. Please understand that we cannot render any warranty services in case of:

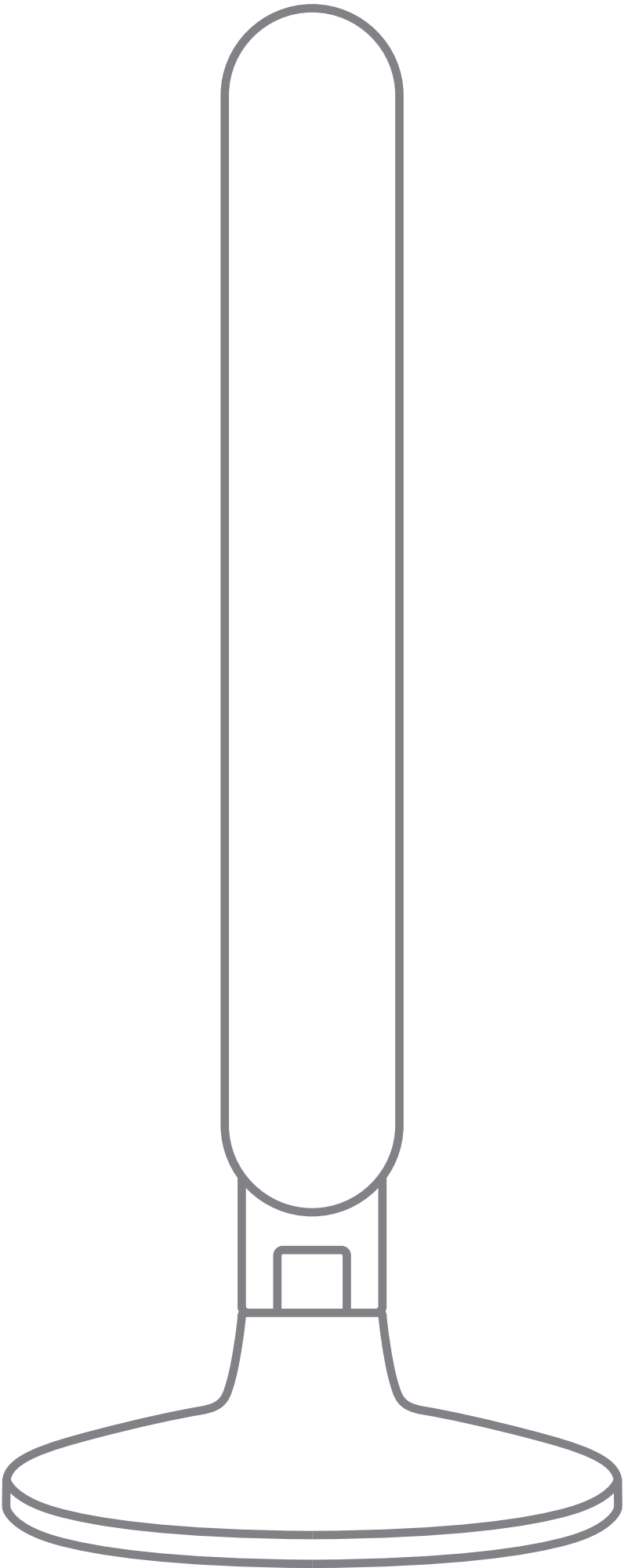
- Misuse or improper handling, installation or use
- Disregard for the operating and safety instructions
- Damages, scratches or wear
- Modifications, manipulation or repairs by third parties
- Damages by Acts of God or transport

In case of a claim, please proceed as follows:

- Only returns accompanied with all accessories and sales receipt will be accepted.
- Contact the MediaRange Support service by e-mail or via our service hotline.
- Please make sure that the package is packed safe for transport.
- Please supply sufficient postage and send it to:  
MediaRange GmbH, Zum Quellenpark 29, 65812 Bad Soden a.Ts., Germany

## **GB** Important notes

**Please note that any warranty claim shall expire if the housing of the product has been opened. This product is not meant for a commercial use or for medical and special applications, where the failure of the product may cause injuries, death or significant material damages. The warranty only covers the replacement of this MediaRange product. The warranty is not applicable for normal wear & tear resulting from erroneous, improper use of the device, negligence, accident or incompatibility. There are no warranty claims if the user manual is not followed and if the device is damaged through improper use or defects caused by other devices. There are no warranty claims if the product is exposed to shocks, electrostatic discharges, heat or humidity effects beyond the product specifications. MediaRange is not liable for any collateral damages or consequential losses, for violation of warranty conditions or any other losses irrespective of the cause. MediaRange GmbH is not liable for the loss of data in units sent to us.**



**RoHS**  
Compliant



For indoor  
use only.

**MADE IN CHINA**

**Item No.:**  
**MROS501**

**MediaRange GmbH**  
D-65182 Bad Soden a.Ts.  
[www.mediarange.de](http://www.mediarange.de)